



# PC-W Technical Datasheet

## Description

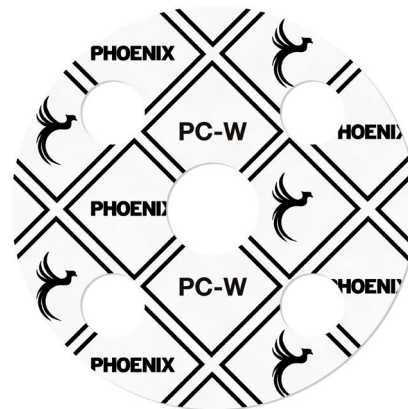
PC-W is a high quality, biaxially orientated PTFE sealing material with a barium sulphate filler.

## Application

PC-W is a high performance material with excellent mechanical properties. The material is suitable for use across a wide range of chemicals including strong caustics, hydrofluoric acid, chlorine and aluminium fluoride

## Typical Physical Properties

Thickness		1.5mm
Density		3.0g/cc
Tensile Strength	ASTM F152	14MPa
Compression	ASTM F36J	4%
Recovery	ASTM F36J	>40%
Residual Stress	DIN52913 (50N/mm <sup>2</sup> @ 175°C)	31 MPa
Gas leakage	BS7531	0.05 ml/min
Creep Relaxation	ASTM F38	20%
Liquid Leakage	ASTM F37	0.2 ml/hr

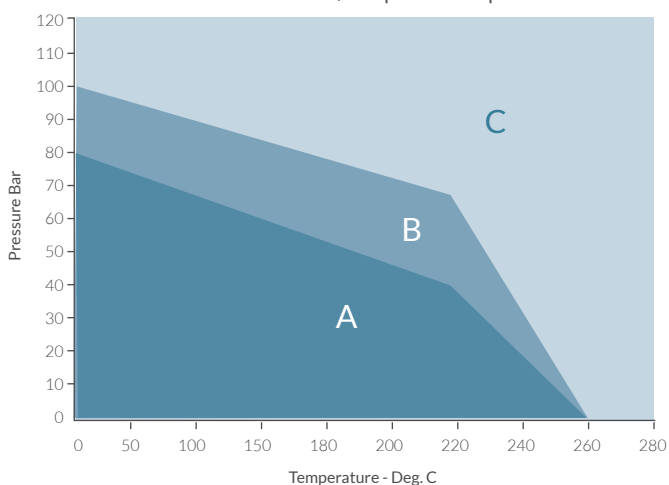


## Availability

<b>Thickness</b>	0.75mm to 6.0mm
<b>Sheet size</b>	1500mm x 1500mm, 1800mm x 1800mm
<b>Specification</b>	Conforms with FDA 21 CFR 177.1550 ABS (19-LD1869901-PDA)
<b>Colour</b>	White

## Service

PC-F Pressure / Temperature Graph



- A = Suitable subject to chemical compatibility
- B = Please contact our Technical Team
- C = Not Suitable

As the company's products are used in multiple application and as the company has no control over the method of their use, the company excludes all conditions or warranties, expressed or implied by statute or otherwise. Any technical co-operation is given for customers assistance only and without liability on the part of the company.